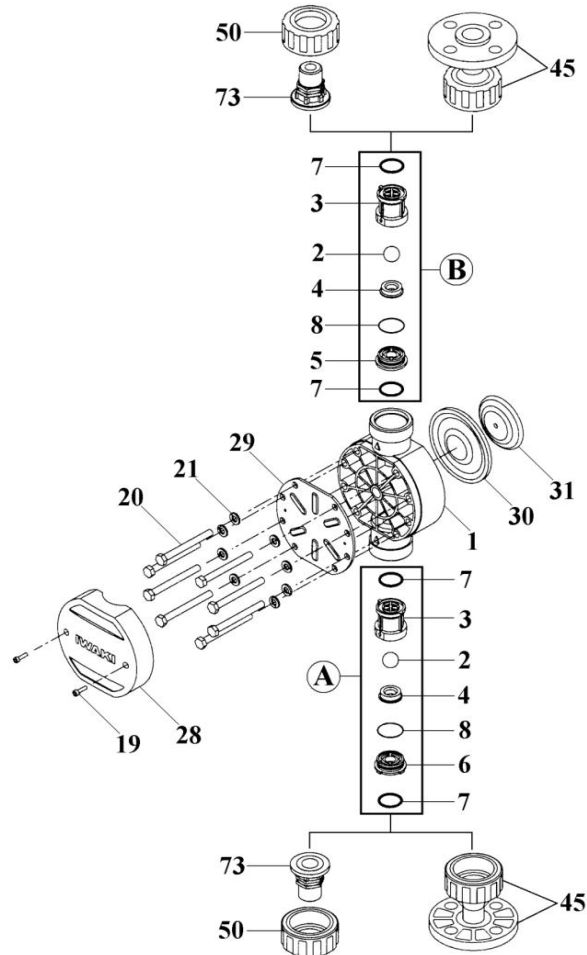


# IX-C150T (PVDF)

No. 94-021  
July 01, 2020



Item	Description		Q'ty	Material	Part No.
1	Pump Head	(Old)	1	PVDF	IX0001
		'1' • '2'	1	PVDF	IX0083
2	Valve Ball		2	Alumina Ceramic	IX0002
3	Valve Guide		2	PVDF	IX0003
4	Valve Seat	TC	2	FKM-A	IX0004
		TE	2	EPDM	IX0037
5	Seat Holder, OUT		1	PVDF	IX0005
6	Seat Holder, IN		1	PVDF	IX0006
7	O-Ring, P-24	TC	4	FKM-A	IX0007
		TE	4	EPDM	IX0038
8	O-Ring, S-29	TC	2	FKM-A	IX0008
		TE	2	EPDM	IX0039
19	Hex. Socket Head Bolt	M4x15	2	SUS304 equivalent	IX0009
20	Hex. Head Bolt	M8x80	8	SUS304 equivalent	IX0010
21	Spring Washer	M8	8	SUS304 equivalent	IX0011
28	Bolt Cover		1	GFRPPE	IX0012
29	Reinforcing Plate		1	Steel	IX0013
30	Diaphragm		1	PTFE (+EPDM)	IX0014
31	Retainer Plate		1	SUS304	IX0015
45	Flange Unit <DN20>	FD	2	PVDF+GFRPP	IX0041
50	Nut	R	2	GFRPP	IX0016
73	Fitting <R3/4>	R	2	PVDF	IX0017
A	Valve Set, IN	TC	1	CE+PVDF+FKM-A	IX0021
		TE	1	CE+PVDF+EPDM	IX0033
B	Valve Set, OUT	TC	1	CE+PVDF+FKM-A	IX0022
		TE	1	CE+PVDF+EPDM	IX0034

△ Subject to change without prior notice! △ Actual pump may differ from the exploded view!