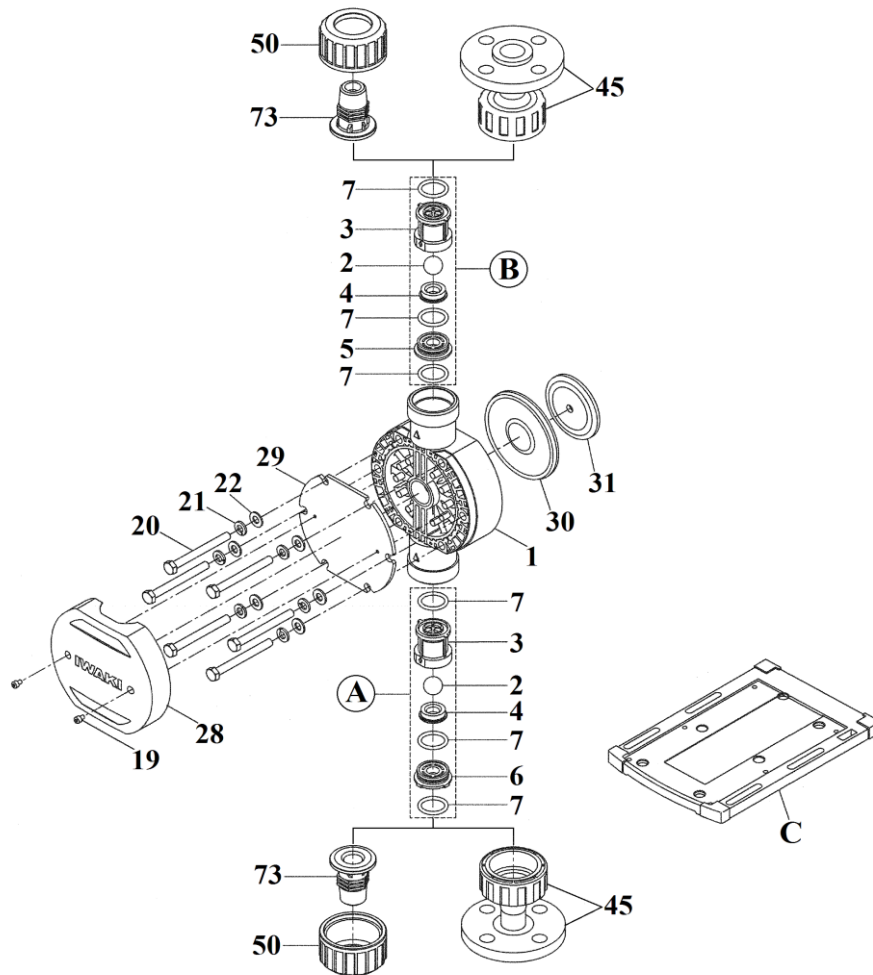


# IX-D300T (PVDF)

No. 94-025  
July 01, 2020



Item	Description		Q'ty	Material	Part No.	
1	Pump Head		1	PVDF	IX0117	
2	Valve Ball		2	Alumina Ceramic	IX0087	
3	Valve Guide		2	PVDF	IX0088	
4	Valve Seat	TC	2	FKM-A	IX0089	
		TE	2	EPDM	IX0090	
5	Seat Holder, OUT		1	PVDF	IX0091	
6	Seat Holder, IN		1	PVDF	IX0092	
7	O-Ring, G-35	TC	6	FKM-A	IX0093	
		TE	6	EPDM	IX0094	
19	Hex. Socket Head Bolt	M4x6	2	SUS304 equivalent	IX0107	
20	Hex. Head Bolt	M8x105	6	SUS316L	IX0118	
21	Spring Washer	M8	6	SUS316L	IX0109	
22	Plate Washer	M8	6	SUS316L	IX0110	
28	Bolt Cover		1	GFRPPE	IX0119	
29	Reinforcing Plate		1	SUS304	IX0120	
30	Diaphragm		1	PTFE (+EPDM)	IX0104	
31	Retainer Plate		1	SUS304	IX0105	
45	Flange Unit	"DN25" FD	2	PVDF+GFRPP	IX0134	
		"JIS25A" FJ	2	PVDF+GFRPP	IX0133	
		"ANSI 1" FA	2	PVDF+GFRPP	IX0135	
50	Nut	R • N	2	GFRPP	IX0121	
73	Fitting	R1	R	2	PVDF	IX0125
		NPT1	N	2	PVDF	IX0126
A	Valve Set, IN	TC	1	CE+PVDF+FKM-A	IX0095	
		TE	1	CE+PVDF+EPDM	IX0097	
B	Valve Set, OUT	TC	1	CE+PVDF+FKM-A	IX0096	
		TE	1	CE+PVDF+EPDM	IX0098	
C	Base		1	GFRPPE	IX0136	

⚠ Subject to change without prior notice! ⚠ Actual pump may differ from the exploded view!