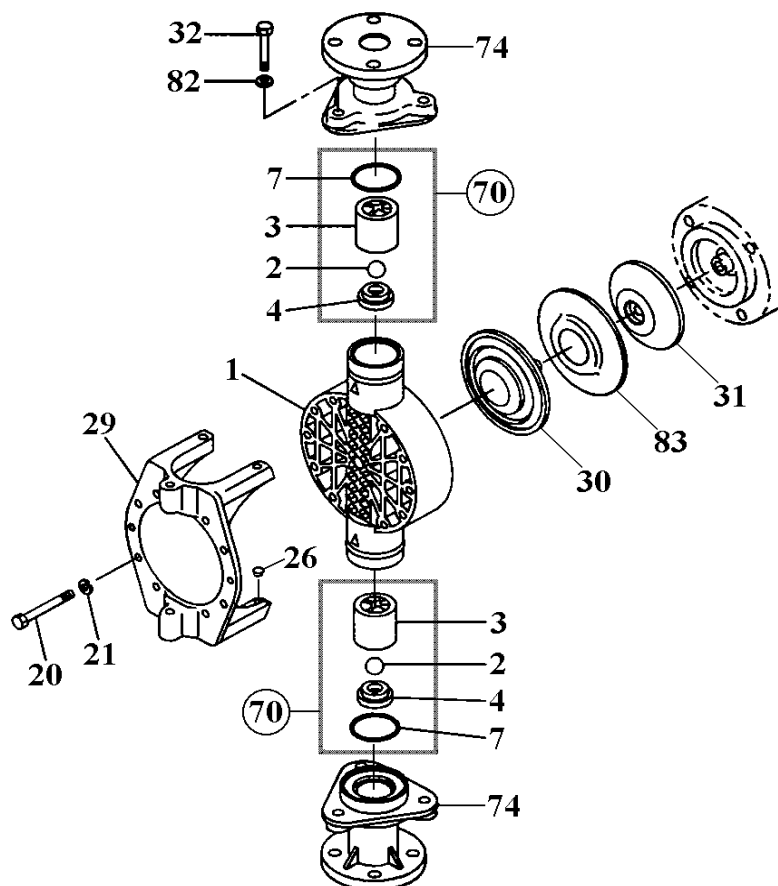


LK-A65•B65 (PVC)

No. LK65V001
Aug. 1st, 2019



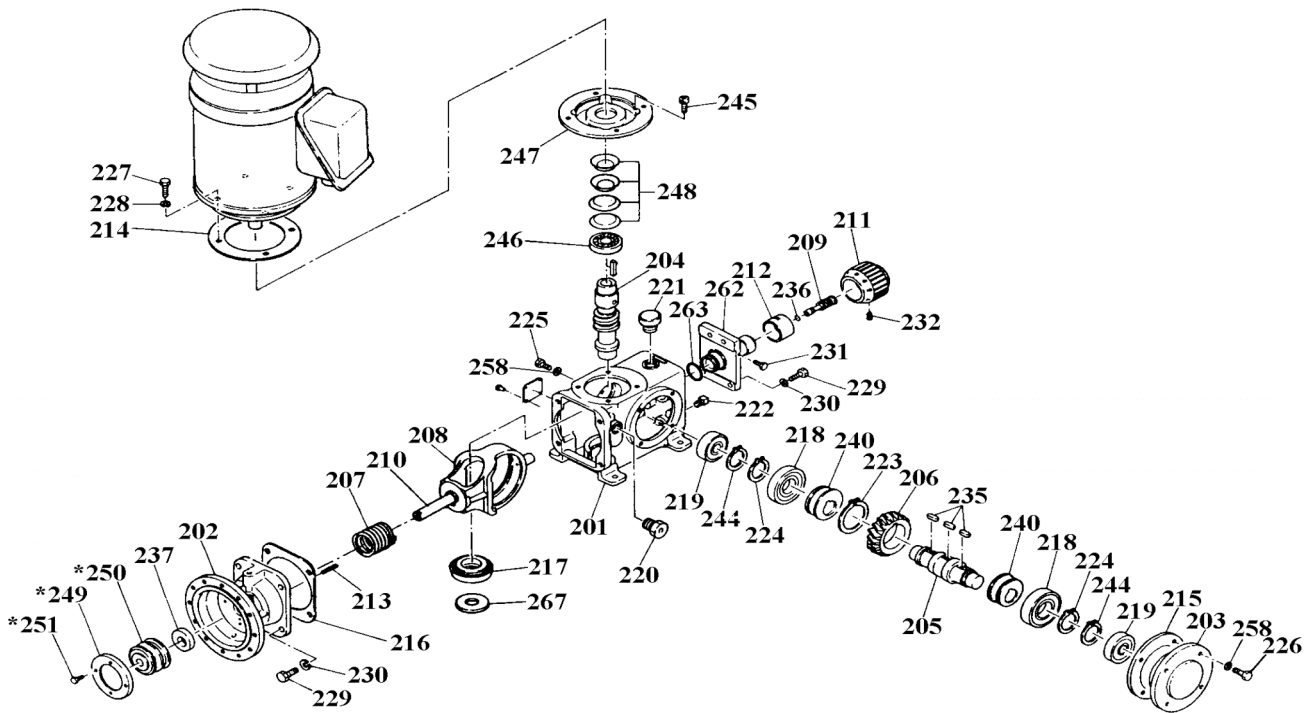
Item	Description	Q'ty	Material	LK-A65•B65	
				Part No.	
1	Pump Head	1	PVC	L1225	
2	Valve Ball	VC	Alumina Ceramic	L0620	
		VS4	SUS304	L0179	
3	Valve Guide	2	PVC	L0180	
4	Valve Seat	2	PVC	L0181	
7	O-Ring, G-65	VC	FKM-A	MD0182	
		VS4	EPDM	MD0060	
20	Hex. Head Bolt	M10x100	SUS304	L0188	
21	Spring Washer	M10	SUS304	L0189	
26	Insert Bumper	2	NBR	L1716	
29	Reinforcing Plate	1	FC250	L1452	
30	Diaphragm	1	PTFE (+EPDM)	L0191	
31	Retainer Plate	1	Steel	L1394	
32	Hex. Head Bolt	M12x70	Carbon Steel	L1454	
70	Valve Set	VC	Ceramic+FKM-A	L0183	
		VS4	SUS304+EPDM	L0182	
74	Flange Unit "T"	DN 40	PVC		
82	Spring Washer	M12	SUS304	L0208	
83	Rear Sheet	1	PTFE	L0425	
*74	Flange Unit	JIS 40	PVC	L1456	

Note: Item No. 74 marked with * (JIS) is an optional part.

iSubject to change without prior notice! iActual pump may differ from the exploded view!

LK-A *Drive Unit*

No. 85-068
Mar. 01, 2006



Item	Description	Q'ty	Remark	Part No.
201	Case	1	FC200	L1274
202	Bracket Assembly (FC200) *See Note	1	LK-A5()	L1363
		1	LK-A6()	L1364
203	Bearing Holder	1	ADC12	L1283
204	Worm (Steel)	1	LK-A()3•5	L1285
		1	LK-A54•57	L1286
205	Worm Wheel Shaft	1	Steel	L1289
206	Worm Wheel (Al.+B. Casting)	1	LK-A()3•5	L1293
		1	LK-A54•57	L1294
207	Spring	1	Steel	L1298
208	Slider	1	FCD400	L1301
209	SL Control Shaft (Steel)	1	LK-A5()	L1303
		1	LK-A6()	L1304
210	Pump Shaft (Steel)	1	LK-A5()	L1308
		1	LK-A6()	L1309
211	Dial	1	GFRPP	L1314
212	Stroke Length Scale (ABS)	1	LK-A5()	L1315
		1	LK-A6()	L1320
213	Spring Pin (6x80)	1	Steel	L1321
214	Gasket A	1		L1527
215	Gasket B	1		L1528
216	Gasket C	1		L1529
217	Roller Bearing	1	4T-30204	L1328
218	Ball Bearing	2	6012	L1331
219	Ball Bearing	2	6205	L1333
220	Oil Gauge (3/4")	1	with O-Ring	L1335
221	Oil Cap (3/8")	1	PP	L1400
222	Plug	1		L1337

*Note: "Bracket Assembly" is equipped with Spring Pin (Item 213) and Oil Seal (Item 237).

Item	Description	Q'ty	Remark	Part No.
223	Retaining Ring	1	Steel	L1338
224	Retaining Ring	2	Steel	L1115
225	Hex. Bolt (M8x10)	1	Steel	L1342
226	Hex. Bolt (M8x20)	4	Steel	L0758
227	Hex. Bolt (M8x25)	4	Steel	L1345
228	Spr. Washer (M8)	4	Steel	L0271
229	Hex. Bolt (M10x30)	8	Steel	L1347
230	Spr. Washer (M10)	8	Steel	L0427
231	Cap Bolt (M6x25)	1	SUS304 eq.	L1349
232	Setscrew (M6x10)	2	SUS304 eq.	L1350
235	Key (7x7x22)	3	Steel	L1354
236	O-Ring (P-9)	1	NBR	L0865
237	Oil Seal (18x35x11)	1	NBR	L1356
240	Eccentric Cam (Steel)	2	LK-A5()	L1370
		2	LK-A6()	L1371
244	Retaining Ring	2	Steel	L1340
245	Cap Bolt (M8x12)	4	Steel	L1397
246	Ball Bearing	1	6005ZZ	L1383
247	Housing	1	FC200	L1398
248	Bellville Spring	4	Steel	L1386
*249	Retainer (GFRPP)	1	*LK-A6()	L1359
*250	Seal Bellows (CR)	1	*LK-A6()	L1361
*251	Cap Bolt (M5x10)	4	*LK-A6()	L1360
258	Seal Washer (M8)	5	NBR	L1375
262	Control Case (FC200)	1	LK-A5()	L1378
		1	LK-A6()	L1379
263	O-Ring (G-40)	1	NBR	L1377
267	Bearing Spacer	1	Steel	

Note: Items 249, 250 & 251 marked with * are required for LK-A6() only.

△ Subject to change without prior notice! △ Actual pump may differ from the exploded view!