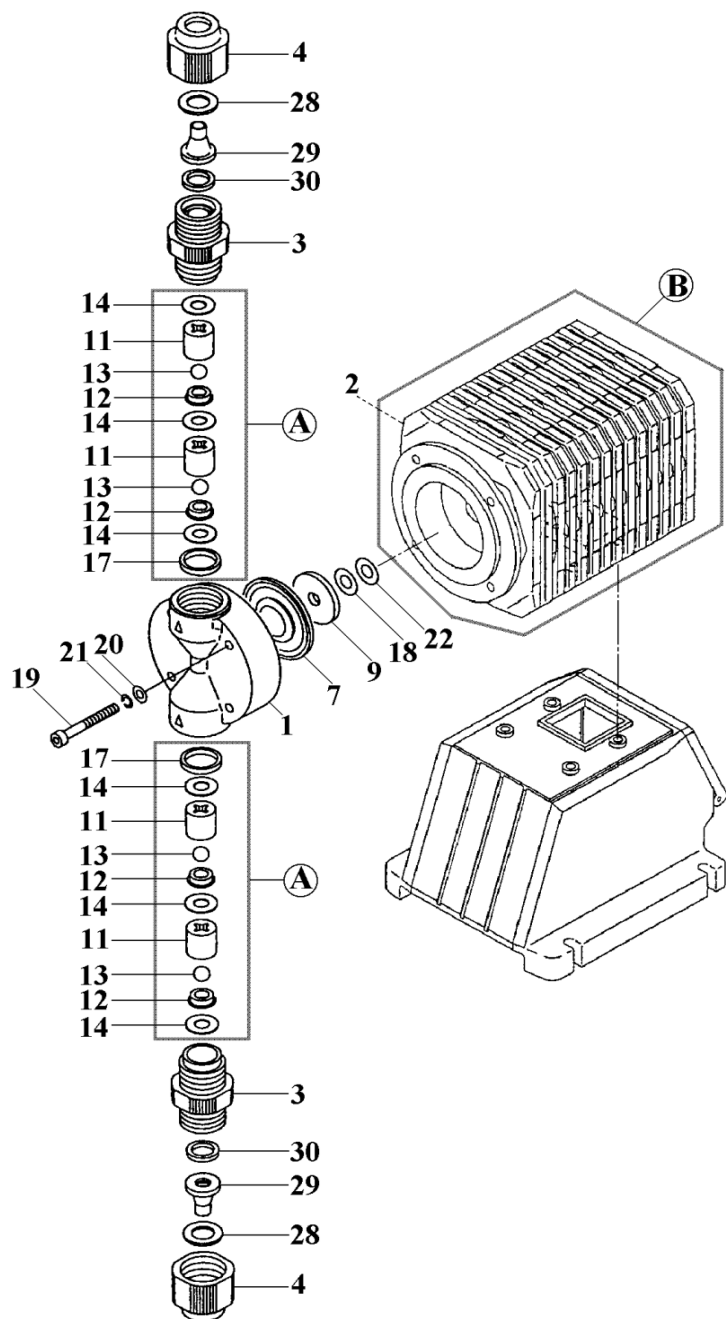


EH-E31•E36-FC* (PVDF)

No. 97-007
May 01, 2020



Item	Description	Remark	Q'ty	EH-E31*FC*		EH-E36*FC*	
				Part No.		Part No.	
1	Pump Head	PVDF	1	EH2103		E0254	
2	Bracket	GFRPPE	1	EH1742		EH1743	
3	Fitting	PVDF	2	EH0947		⇐	
4	Fitting Nut	PVDF	2	EH0933		⇐	
7	Diaphragm	PTFE	1	EH2105		EH2108	
9	Diaphragm Retainer	Steel	1	EH0622		EH0637	
11	Valve Guide	PVDF	4	EH0612		E0351	
12	Valve Seat	PCTFE	4	EH0593		⇐	
13	Valve Ball	Ceramic	4	E0213		⇐	
14	Valve Gasket	PTFE	6	E0272		⇐	
17	Gasket	PTFE	2	EH0355		⇐	
*18	Diaphragm Spacer	t: 0,2 mm	Brass	*	EH0625		⇐
		t: 0,3 mm	Brass	*	EH0626		⇐
		t: 0,5 mm	Brass	*	EH0627		⇐
		t: 0,7 mm	Brass	*	E0036		⇐
19	Hex. Socket Cap Bolt	M5x40	SUS316L	4	EH2106		⇐
20	Plate Washer	M5	SUS316	4	E0127		⇐
21	Spring Washer	M5	SUS316L	4	E0129		⇐
22	Diaphragm Seal	EPDM	1	EH1861		⇐	
28	Hose Stopper (6)	10x12mm	SUS304	2	E0332		⇐
29	Fitting Spacer (6)	10x12mm	PVDF	2	EH0937		⇐
30	Gasket	PTFE	2	EH0939		⇐	
B	Drive Unit (20E)		1	EH1755		EH1758	
*	Control Unit [AC220~240V] "EHC-20EPE"		1	EH1751		⇐	
A	Valve Set		2	EH1167		EH0952	
*Wet End Set		FC-6	10x12mm	1	EH3045		EH3046

- *Notes: 1) Item 18: None or one or more spacers is required for a pump.
2) "Control Unit" is not illustrated.
3) "Wet End" consists of Item 1+3+4+28+29+30+A.

△ Subject to change without prior notice! △ Actual pump may differ from the exploded view!