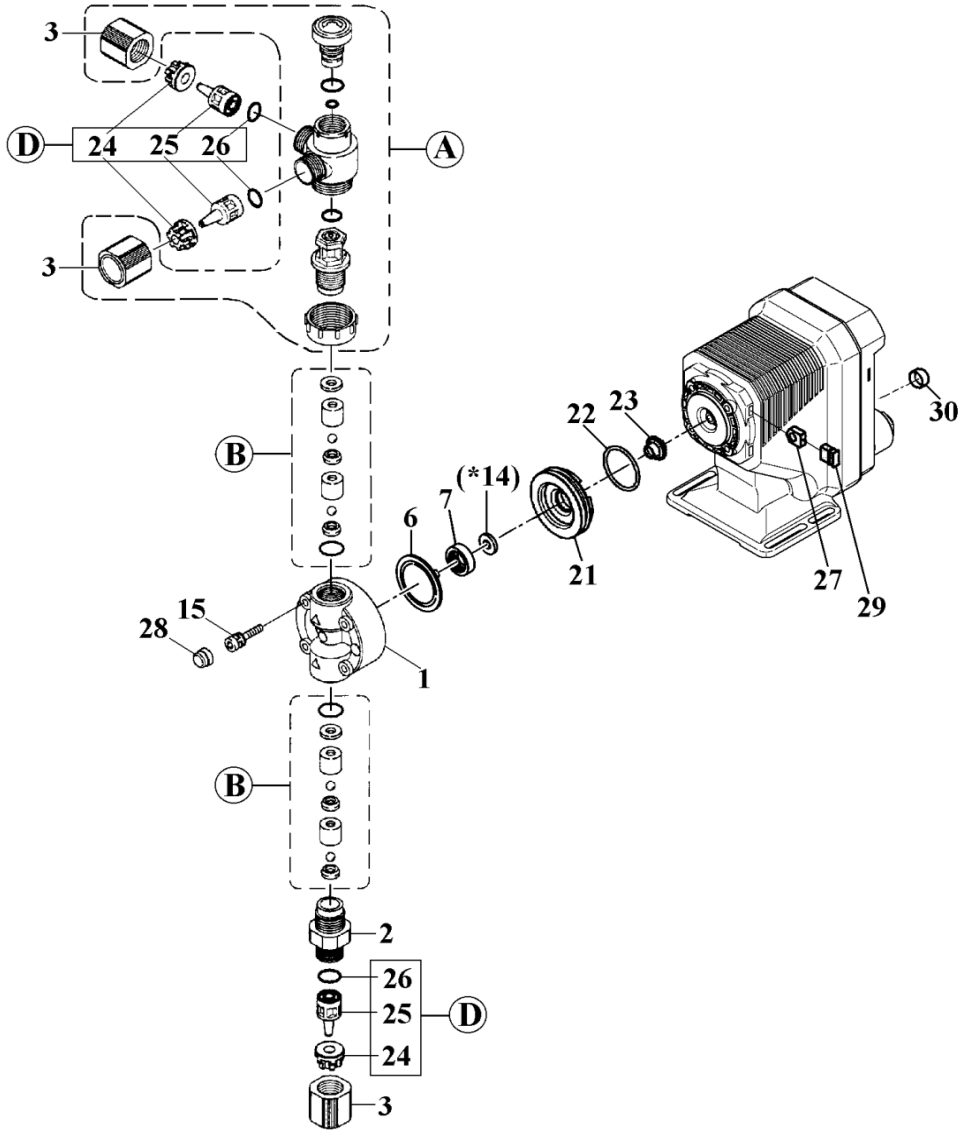


# EJ-B09-V

No. **96-011**  
Feb. 01, 2020



Item	Description	Q'ty	Material	Part No.	
1	<b>Pump Head</b>	1	PVC	<b>E0307</b>	
2	<b>Fitting</b>	1	PVC	<b>E0190</b>	
3	<b>Fitting Nut</b>	3	PVC	<b>E0194</b>	
6	<b>Diaphragm</b>	1	PTFE	<b>E0021</b>	
7	<b>Diaph. Retainer</b>	1	PPS	<b>E0353</b>	
*14	<b>Spacer</b>	t:0,1mm	*	Brass	<b>E0031</b>
		t:0,2mm	*	Brass	<b>E0033</b>
		t:0,3mm	*	Brass	<b>E0034</b>
		t:0,5mm	*	Brass	<b>E0035</b>
		t:0,7mm	*	Brass	<b>E0036</b>
15	<b>Cap Bolt (M4x35)</b>	4	SUS316L	<b>E0037</b>	
24	<b>Hose Stopper</b>	3	GFRPPS	<b>E0042</b>	
25	<b>Hose Adaptor</b>	3	PVC	<b>E0044</b>	
26	<b>O-Ring (P-9)</b>	VC	3	FKM-A	<b>E0046</b>
		VH	3	EPDM	<b>E0047</b>

Item	Description	Q'ty	Remark	Part No.
21	<b>Bracket Spacer</b>	1	SPS	<b>E0354</b>
22	<b>O-Ring (AS568-126)</b>	1	EPDM	<b>E0358</b>
23	<b>Diaphragm Seal</b>	1	EPDM	<b>E0359</b>
27	<b>Nut Spacer</b>	4	SUS304	<b>E0360</b>
28	<b>Bolt Cover</b>	4	EPDM	<b>E0361</b>
29	<b>Nut Cover</b>	4	EPDM	<b>E0362</b>
30	<b>Cap (DIN Connector)</b>	1	EPDM	<b>E0069</b>
A	<b>Air Vent Valve Set</b>	VC	1	<b>E0378</b>
		VH	1	<b>E0379</b>
B	<b>Valve Set</b>	VC	2	<b>E0491</b>
		VH	2	<b>E0490</b>
D	<b>Connector Set [24+25+26]</b>	VC	3	4x6mm <b>E0385</b>
		VH	3	<b>E0386</b>
	<b>Wet End Set &lt;1+2+3+A+B&gt;</b>	VC	1	4x6mm <b>E0133</b>
		VH	1	<b>E0134</b>

\*Note: "Diaphragm Spacer" (Item 14) ⇒ None or one or more spacers is required for a pump.