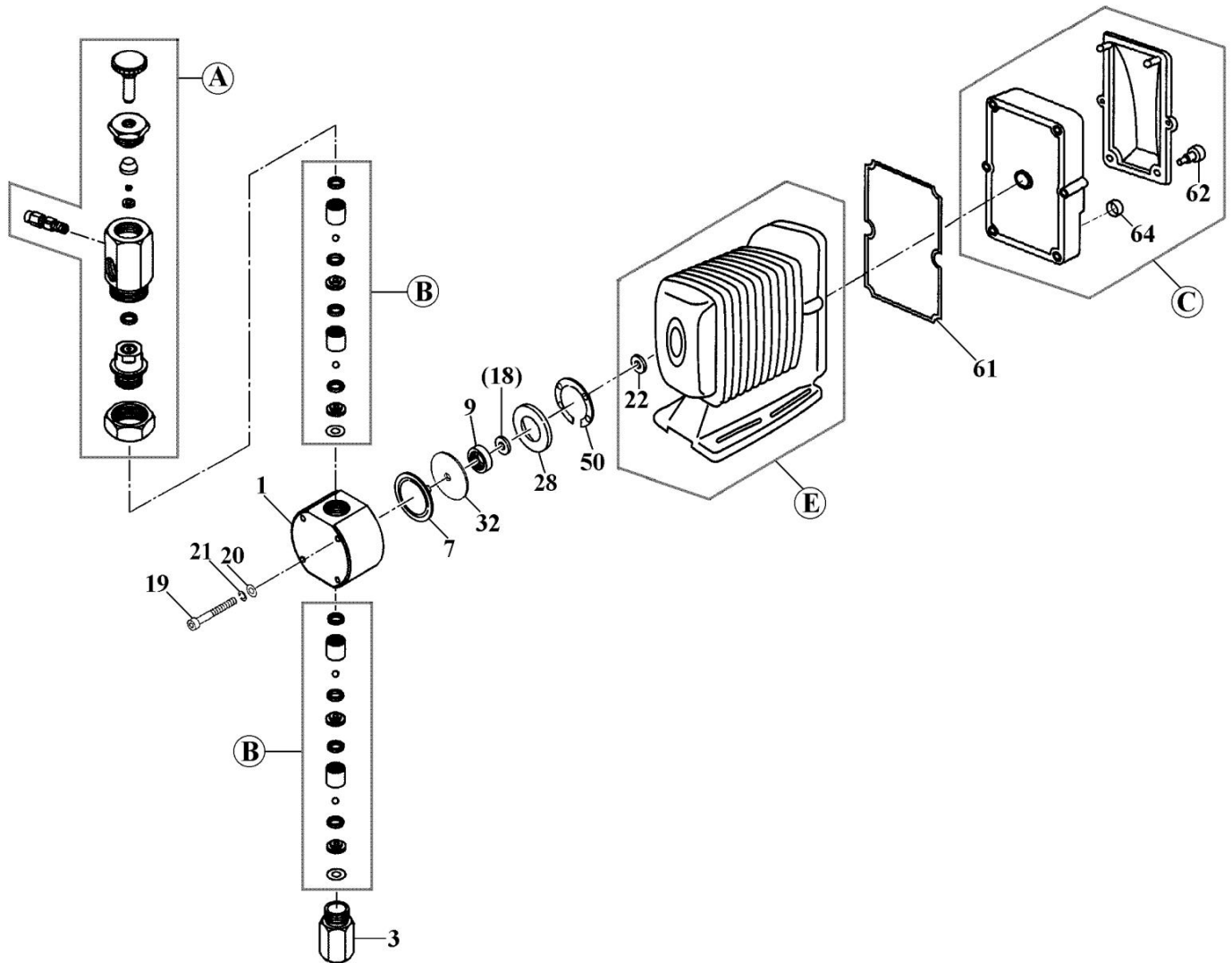


# EWN-B11·C16-SH-H <SUS316>

No. 92-079  
Mar. 01, 2020



Item	Description	Q'ty	Material	Part No.
1	Pump Head	"B11"	SUS316	E0281
		"C16"	SUS316	E0277
3	Fitting (Rc¼)	1	SUS316	E0488
7	Diaphragm	"B11"	PTFE	E0021
		"C16"	PTFE	E0022
9	Diaphragm Retainer	"B11"	SUS304	E0122
		"C16"	SUS304	E0123
*18	Spacer	t:0,1mm	Brass	E0031
		t:0,2mm	Brass	E0033
		t:0,3mm	Brass	E0034
		t:0,5mm	Brass	E0035
		t:0,7mm	Brass	E0036
19	Cap Bolt (M4x45)	4	SUS316L	E0124
20	Plate Washer (M4)	4	SUS316	E0126
21	Spring Washer (M4)	4	SUS316L	E0128
22	Diaphragm Seal	1	EPDM	E0543

Item	Description	Q'ty	Remark	Part No.
28	Bracket Spacer	"B11"	GFRPPE	E0039
		"C16"	PPE	E0040
32	Rear Diaph. Sheet	1	PTFE	E0130
50	Pump Head Gasket	1	EPDM	E0048
61	Controller Gasket	1	EPDM	E0073
62	Thumb Bolt	2	PPE	E0066
64	Cap (DIN Connector)	2	EPDM	E0069
A	Air Vent Valve Set	1	Rc¼	E0531
B	Valve Set	"B11"		E0532
		"C16"		E0502
C	Control Unit	"B11"	BER-H	E0481
		"C16"	CER-H	E0482
		"B11"	BEY-H	E0590
		"C16"	CEY-H	E0591
E	Drive Unit	"B11"		E0439
		"C16"		E0441

\*Note: "Spacer" (Item 18) ⇒ None or one or more spacers is required for a pump.

⚠ Subject to change without prior notice! ⚠ Actual pump may differ from the exploded view!