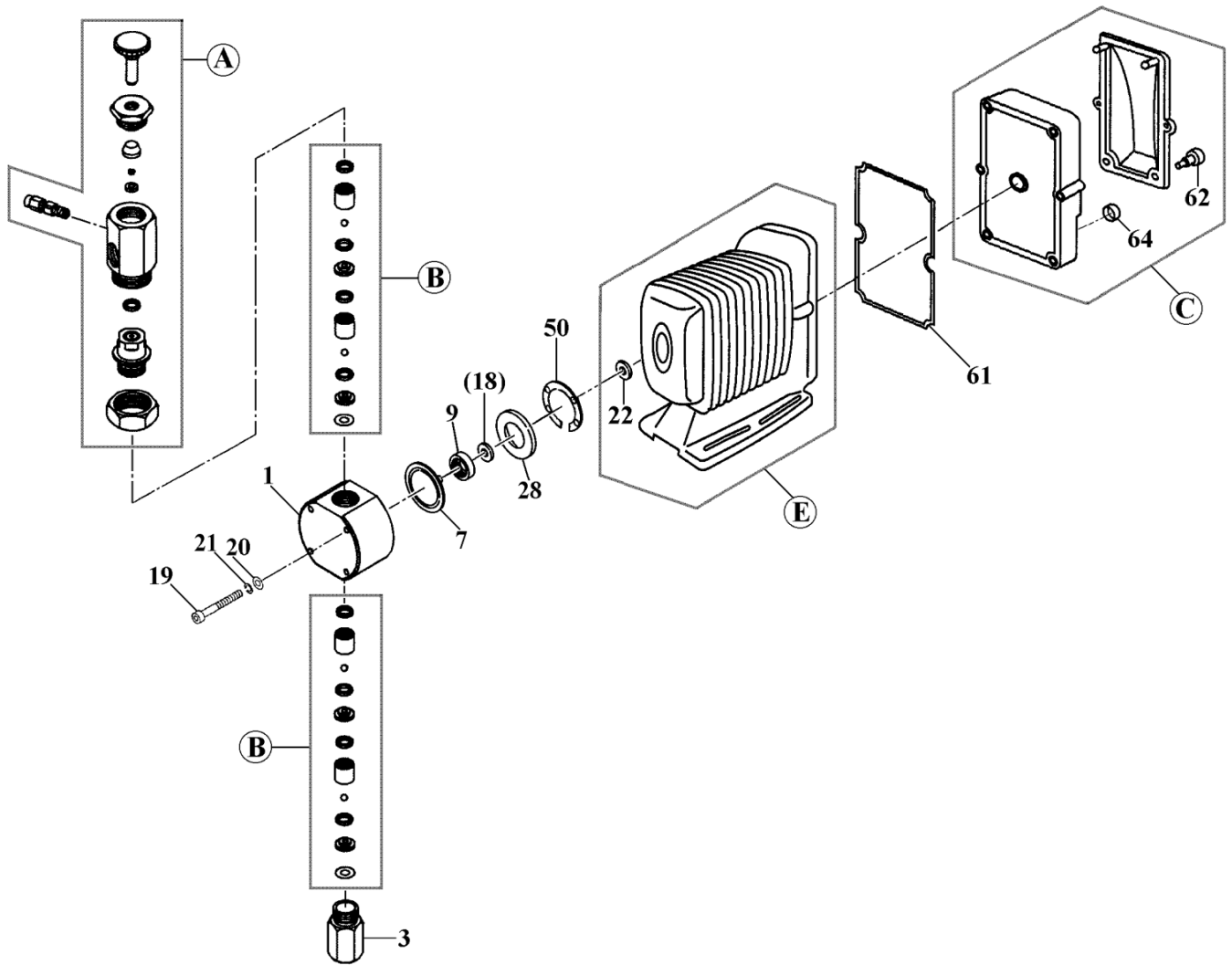


EWN-B11-SH <SUS316>

No. 92-074
Mar. 01, 2020



Item	Description	Q'ty	Material	Part No.
1	Pump Head	1	SUS316	E0276
3	Fitting (Rc¼)	1	SUS316	E0488
7	Diaphragm	1	PTFE	E0021
9	Diaph. Retainer	1	PPS	E0026
*18	Spacer	t:0,1mm	* Brass	E0031
		t:0,2mm	* Brass	E0033
		t:0,3mm	* Brass	E0034
		t:0,5mm	* Brass	E0035
		t:0,7mm	* Brass	E0036
19	Cap Bolt (M4x45)	4	SUS316L	E0124
20	Plate Washer (M4)	4	SUS316	E0126
21	Spring Wash. (M4)	4	SUS316L	E0128

Item	Description	Q'ty	Remark	Part No.
22	Diaphragm Seal	1	EPDM	E0543
28	Bracket Spacer	1	GFRPPE	E0039
50	Pump Head Gasket	1	EPDM	E0048
61	Controller Gasket	1	EPDM	E0073
62	Thumb Bolt	2	PPE	E0066
64	Cap (DIN Connector)	2	EPDM	E0069
A	Air Vent Valve Set	1	Rc¼	E0531
B	Valve Set	2		E0532
C	Control Unit	1	BER	E0057
		1	BEY	E0588
E	Drive Unit	1		E0439

*Note: "Spacer" (Item 18) ⇒ None or one or more spacers is required for a pump.

⚠ Subject to change without prior notice! ⚠ Actual pump may differ from the exploded view!