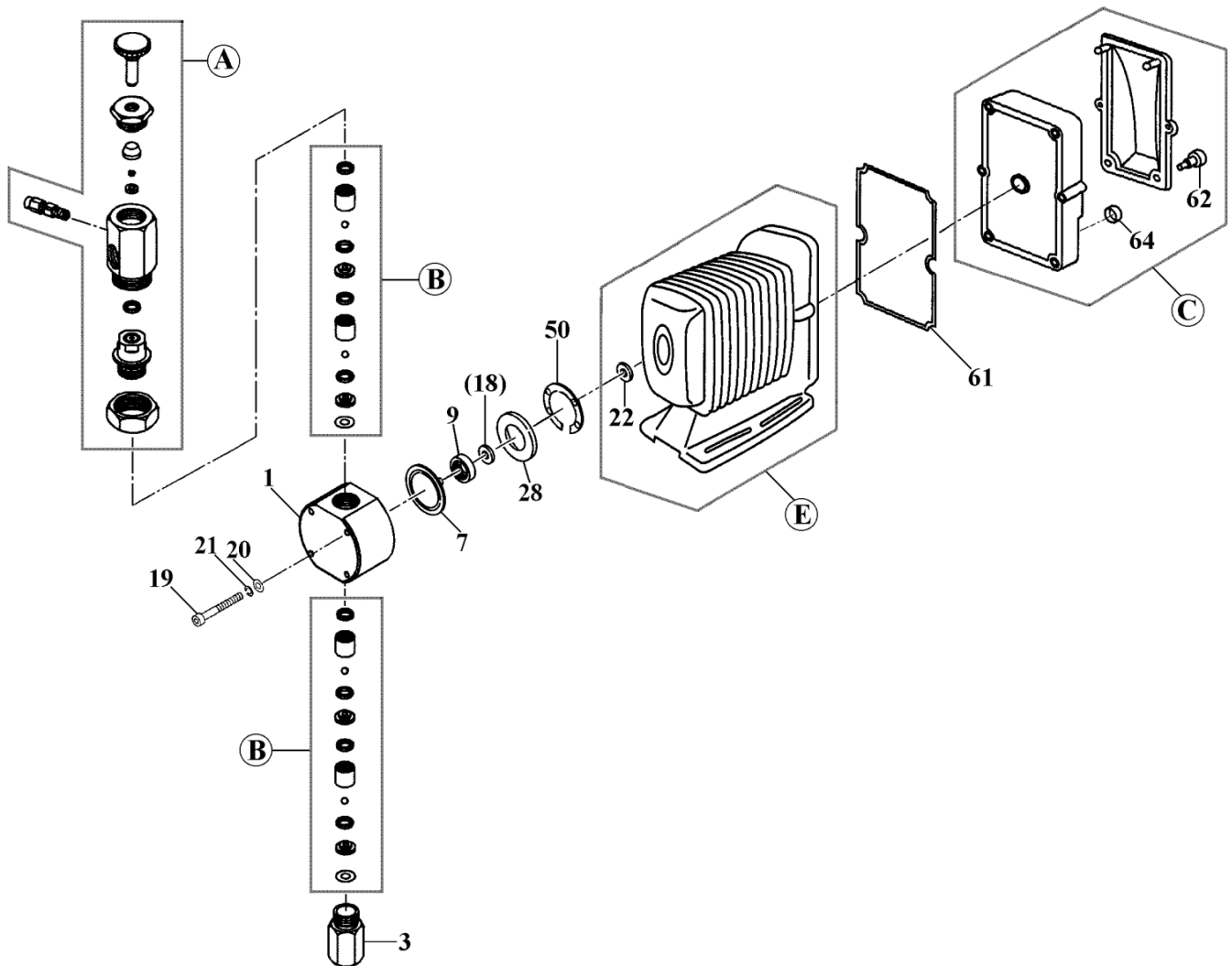


# EWN-B21·C21-SH <SUS316>

No. 92-076  
Mar. 01, 2020



Item	Description	Q'ty	Material	Part No.	
1	<b>Pump Head</b>	1	SUS316	<b>E0278</b>	
3	<b>Fitting (Rc¼)</b>	1	SUS316	<b>E0488</b>	
7	<b>Diaphragm</b>	1	PTFE	<b>E0023</b>	
9	<b>Diaph. Retainer</b>	1	PPS	<b>E0028</b>	
*18	<b>Spacer</b>	t:0,1mm	*	Brass	<b>E0031</b>
		t:0,2mm	*	Brass	<b>E0033</b>
		t:0,3mm	*	Brass	<b>E0034</b>
		t:0,5mm	*	Brass	<b>E0035</b>
		t:0,7mm	*	Brass	<b>E0036</b>
19	<b>Cap Bolt (M4x45)</b>	4	SUS316L	<b>E0124</b>	
20	<b>Plate Washer (M4)</b>	4	SUS316	<b>E0126</b>	
21	<b>Spring Wash. (M4)</b>	4	SUS316L	<b>E0128</b>	
22	<b>Diaphragm Seal</b>	1	EPDM	<b>E0543</b>	

Item	Description	Q'ty	Remark	Part No.	
28	<b>Bracket Spacer</b>	1	GFRPPE	<b>E0041</b>	
50	<b>Pump Head Gasket</b>	1	EPDM	<b>E0048</b>	
61	<b>Controller Gasket</b>	1	EPDM	<b>E0073</b>	
62	<b>Thumb Bolt</b>	2	PPE	<b>E0066</b>	
64	<b>Cap (DIN Connector)</b>	2	EPDM	<b>E0069</b>	
A	<b>Air Vent Valve Set</b>	1	Rc¼	<b>E0531</b>	
B	<b>Valve Set</b>	2		<b>E0502</b>	
C	<b>Control Unit</b>	"B21"	1	BER	<b>E0057</b>
		"C21"	1	CER	<b>E0058</b>
		"B21"	1	BEY	<b>E0588</b>
		"C21"	1	CEY	<b>E0589</b>
E	<b>Drive Unit</b>	"B21"	1		<b>E0439</b>
		"C21"	1		<b>E0441</b>

\*Note: "Spacer" (Item 18) ⇒ None or one or more spacers is required for a pump.

△Subject to change without prior notice! △Actual pump may differ from the exploded view!