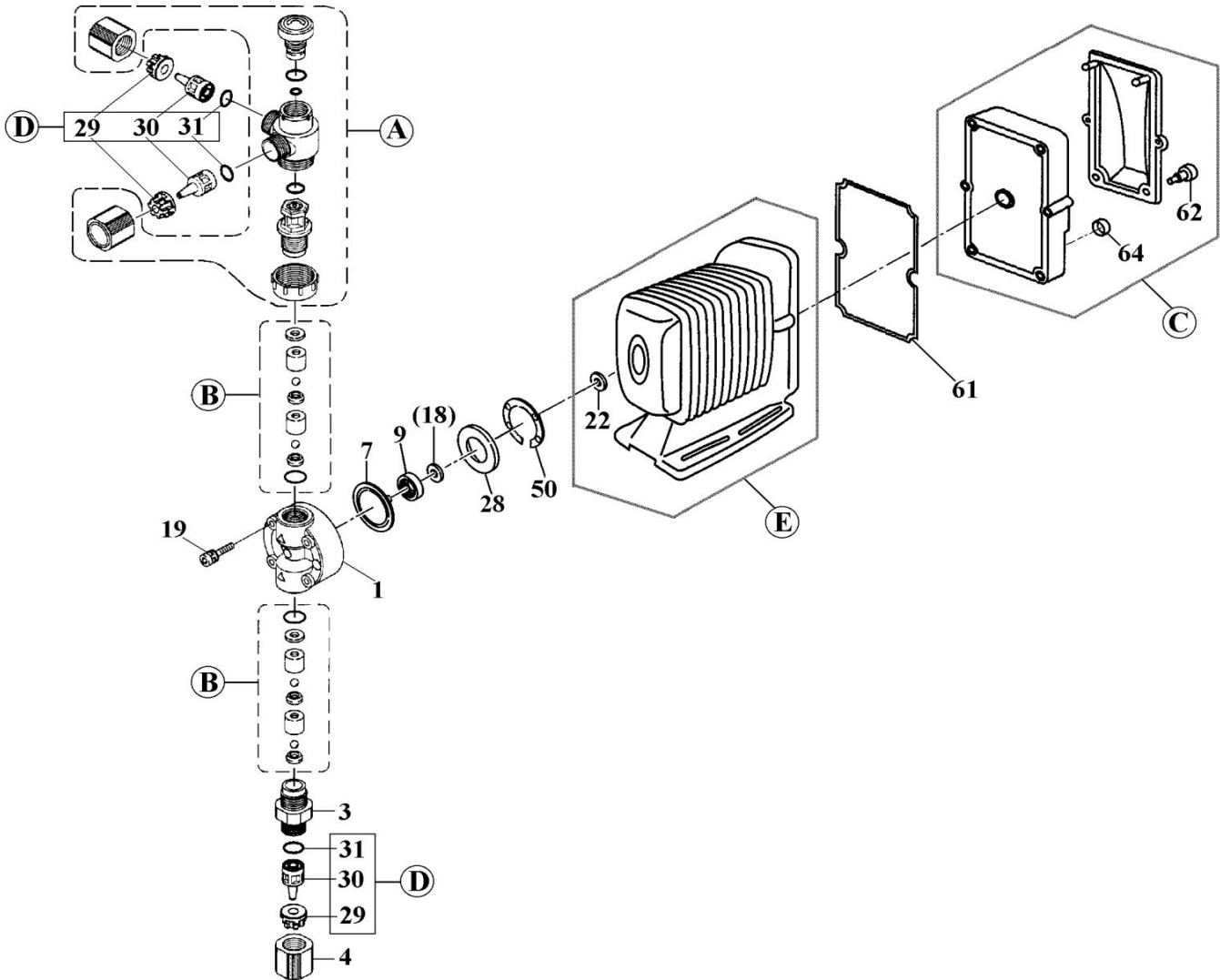


EWN-B21•C21-TC <PVDF>

No. 92-071
Mar. 01, 2020



Item	Description	Q'ty	Material	Part No.	
1	Pump Head	1	PVDF	E0252	
3	Fitting	1	PVDF	E0255	
4	Fitting Nut	1	PVDF	E0261	
7	Diaphragm	1	PTFE	E0023	
9	Diaph. Retainer	1	PPS	E0028	
*18	Spacer	t:0,1mm	*	Brass	E0031
		t:0,2mm	*	Brass	E0033
		t:0,3mm	*	Brass	E0034
		t:0,5mm	*	Brass	E0035
		t:0,7mm	*	Brass	E0036
19	Cap Bolt (M4x35)	4	SUS316L	E0037	
22	Diaphragm Seal	1	EPDM	E0543	
28	Bracket Spacer	1	GFRPPE	E0041	
29	Hose Stopper (4x6)	3	GFRPPS	E0042	
30	Hose Adaptor (4x6)	3	PVDF	E0113	

Item	Description	Q'ty	Remark	Part No.	
31	O-Ring (P-9)	3	FKM-A	E0046	
50	Pump Head Gasket	1	EPDM	E0048	
61	Controller Gasket	1	EPDM	E0073	
62	Thumb Bolt	2	PPE	E0066	
64	Cap (DIN Connector)	2	EPDM	E0069	
A	Air Vent Valve Set	1		E0382	
B	Valve Set	2		E0438	
C	Control Unit	"B21"	1	BER	E0057
		"C21"	1	CER	E0058
		"B21"	1	BEY	E0588
		"C21"	1	CEY	E0589
D	Connector Set	3	4x6mm	E0401	
E	Drive Unit	"B21"	1		E0439
		"C21"	1		E0441
Wet End Set <1+3+4+A+B>		1	TC	E0100	

*Note: "Spacer" (Item 18) ⇒ None or one or more spacers is required for a pump.

△ Subject to change without prior notice! △ Actual pump may differ from the exploded view!