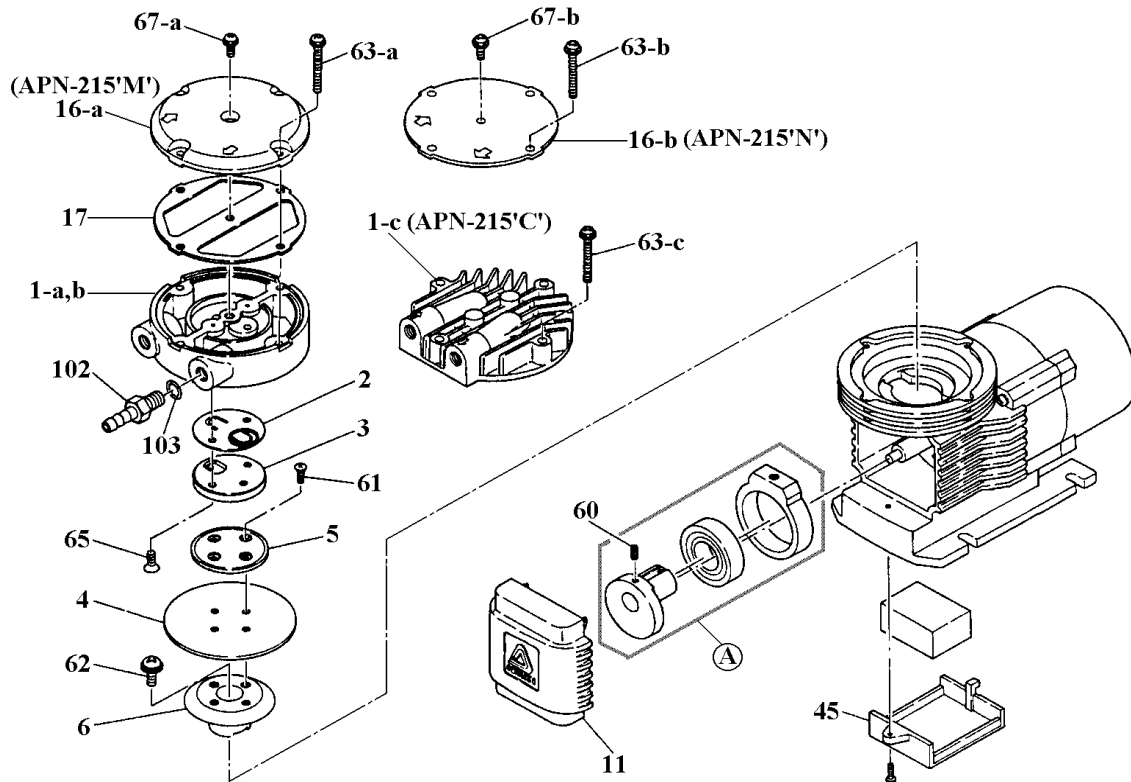


APN-215 (Single Head)

No. 91-024
Mar. 01, 2006



Item	Description	Remark	Q'ty	APN-215 'M'	APN-215 'N'	APN-215 'C'	
				Part No.	Part No.	Part No.	
1-a,b/c	Pump Head Hose (Ø 9mm) & G1/8"	Material →	1	AP0290 GFRPP	AP0345 GFRPA	AP0353 ADC12	
2	Valve	V	FKM	1	AP0291	⇐	⇐
		E	EPDM	1	AP0292	⇐	⇐
3	Valve Seat		GFRPPS	1	AP0346	⇐	⇐
4	Diaphragm	V	FKM	1	AP0294	AP0358	⇐
		E	EPDM	1	AP0295	AP0359	⇐
5	Retainer Plate		GFRPPS	1	AP0347	⇐	⇐
6	Connecting Rod A		GFRPPE	1	AP0297	⇐	⇐
11	Bracket Cover		GFRPP	1	AP0300	⇐	⇐
16-a/b	Pump Head Cover	Material →	1	AP0302 GFRPP	AP0348 SUS304		
17	Seal Gasket	V	FKM	1	AP0303	⇐	
		E	EPDM	1	AP0304	⇐	
45	Capacitor Cover		GFRPPE	1	AP0531	⇐	⇐
60	Setscrew (Steel)		M4x8	2	AP0308	⇐	⇐
61	Screw (SUS304 equivalent)		M4x8	4	AP0503	⇐	⇐
62	Screw+Washer (Steel)		M6x15	1	AP0309	⇐	⇐
63-a/b/c	Screw+Washer (S4 equiv.)	Size →		4	AP0412 M5x45	AP0409 M5x40	AP0354 M5x30
				2	AP0504 M5x12	⇐	AP0505 M5x10
65	Screw (SUS304 equivalent)	Size →		2	AP0504 M5x12	⇐	
67-a/b	Screw+Washer (S4 equiv.)	Size →		1	AP0413 M5x18	AP0352 M5x12	
102	Fitting		GFRPPE	2	AP0518	⇐	⇐
103	O-Ring, P-8	V	FKM	2	AP0028	⇐	⇐
		E	EPDM	2	AP0312	⇐	⇐
A	Connecting Rod B Unit			1	AP0519	AP0520	⇐

△ Subject to change without prior notice! △ Actual pump may differ from the exploded view!
