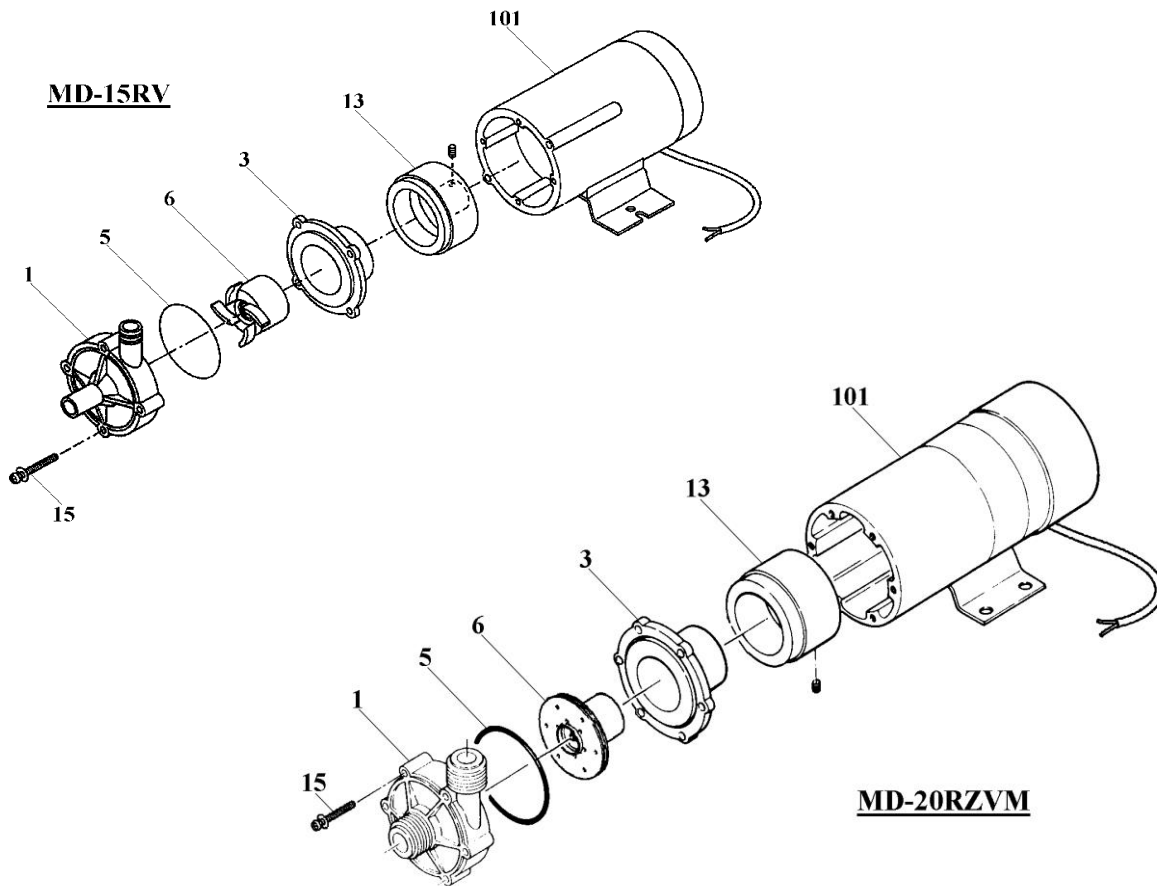


# MD-15RV • 20RZVM

No. 52-016  
Aug. 01, 2017



| Item  | Description                                | Q'ty              | Material          | MD-15RV           |                   | MD-20RZVM      |               |
|-------|--|-------------------|-------------------|-------------------|-------------------|----------------|---------------|
|       |  |                   |                   | Part No.          |                   | Part No.       |               |
| 1     | <b>Front Casing (+Bearing) Unit</b>        | 1                 | CFRPVDF+PTFE      | <b>MD0715</b>     |                   | <b>*MD0718</b> |               |
|       | " 'M' "                                    | 1                 |                   |                   |                   | <b>MD0720</b>  |               |
| 3     | <b>Rear Casing (+Bearing) Unit</b>         | 1                 | CFRPVDF+PTFE      | <b>MD0716</b>     |                   | <b>MD0721</b>  |               |
| 5     | <b>O-Ring</b>                              | <b>AS568A-034</b> | FKM               | <b>MD0007</b>     |                   |                |               |
|       |  |                   | EPDM              | <b>MD0008</b>     |                   |                |               |
|       |  | <b>81x1,78</b>    | FKM               |                   |                   | <b>MD0003</b>  |               |
|       |  |                   | EPDM              |                   |                   | <b>MD0004</b>  |               |
| 6     | <b>Impeller Unit</b>                       | 1                 | CFRPVDF+Ferrite+  | <b>MD0717</b>     |                   |                |               |
|       |  | 1                 | Alumina Ceramic   |                   |                   | <b>MD0722</b>  |               |
| 13    | <b>Drive Magnet Unit</b>                   | 1                 | Aluminium+Ferrite | <b>MD0614</b>     |                   | <b>MD0615</b>  |               |
| 15    | <b>Screw+SW+PW</b>                         | <b>M4x28</b>      | 4                 | SUS304 equivalent | <b>MD0017</b>     |                |               |
|       |  | <b>M4x32</b>      | 6                 | SUS304 equivalent |                   |                | <b>MD0043</b> |
| * 101 | <b>Motor '220N'</b><br><b>[AC220/240V]</b> | <b>10W</b>        | 1                 |                   | <b>1231121500</b> |                |               |
|       |  | <b>20W</b>        | 1                 |                   |                   |                | <b>MD0405</b> |

\*Note: "Hose" connection type Front Casing Unit (not illustrated) for MD-20RZV is optionally available.

△ Subject to change without prior notice! △ Actual pump may differ from the exploded view!