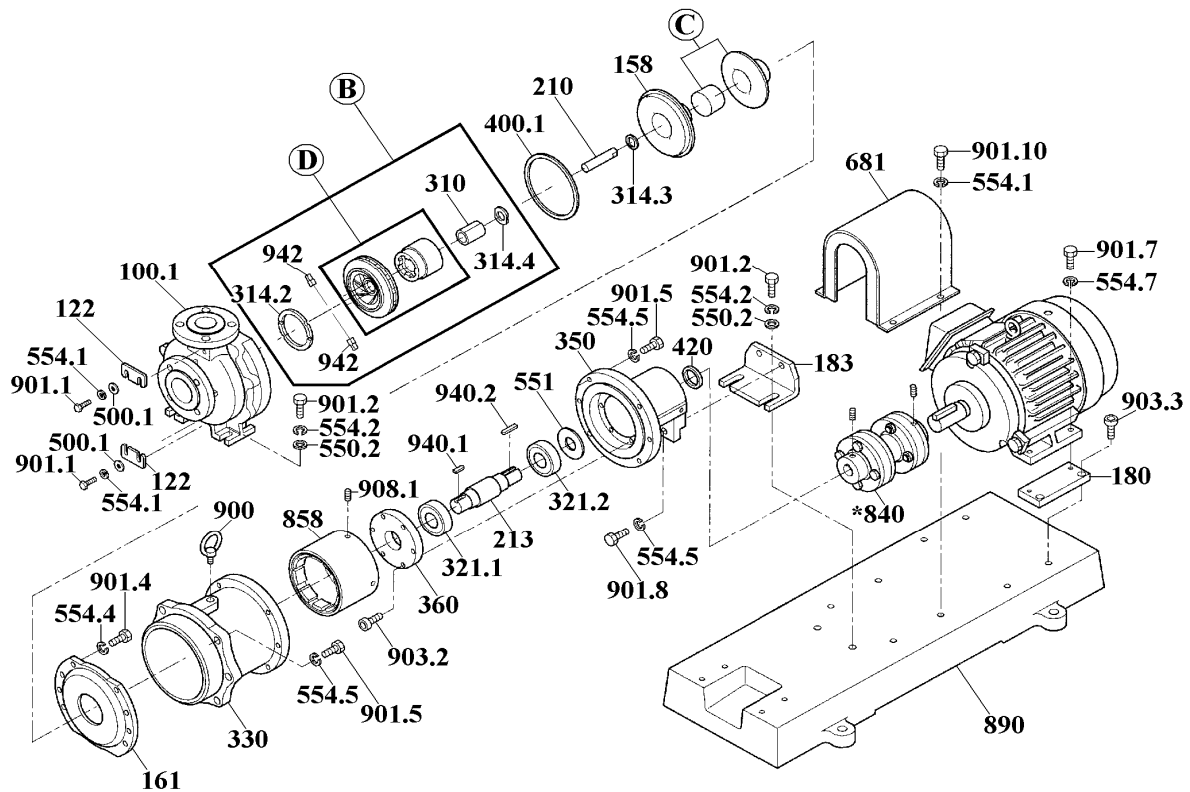


MDM 32-2-PKKC-H•T =PFA=

No. 60-170
Mar. 01, 2009



Item	Description	Q'ty	Remarks	MDM32-2-PKKC-*H*		MDM32-2-PKKC-*T*		
				Part No.	Code No.	Part No.	Code No.	
100.1	F.Casing with Air/Drain Hole	1	PFA+SiC+ Ductile Iron	MDM1013	1231150640			
	Unit (ISO) less Air/Drain Hole	1		MDM1012	1231150630	↔	↔	
122	Air Vent Plate•Drain Plate	2	Steel	MDM0009	1240485700	↔	↔	
158	Rear Casing	1	PFA	MDM0877	1231038800	↔	↔	
C	Rear Casing Cover Unit	1	FRP	MDM0908	1231063520	↔	↔	
161	Rear Casing Support	1	Ductile Iron	MDM1016	1210039700	↔	↔	
183	Support	1	Steel	MDM1018	1231137900	↔	↔	
*D	Impeller+Magnet Capsule Unit <PFA> "50Hz" <*See Note (2)>	225	5,5•7,5kW	MDM0812	1231039510	MDM0820	1231039610	
		160~220		<Specify impeller size.>	<Specify impeller size.>			
		225	11,0•15,0kW	MDM0820	1231039610	↔	↔	
		160~220		<Specify impeller size.>	<Specify impeller size.>			
210	Spindle	1	SiC	MDM0372	1240680400	↔	↔	
310	Bearing	1	SiC	MDM0735	1240778300	↔	↔	
314.2	Mouth Ring	1	SiC	MDM0488	1240683700	↔	↔	
314.3	Rear Thrust Ring	1	PTFE (Natural)	MDM0615	1240690800	↔	↔	
314.4	Rear Ring	1	SiC	MDM0126	1240680800	↔	↔	
330	Bracket	1	Ductile Iron	MDM1022	1210039900	↔	↔	
400.1	Gasket	1	PTFE	MDM0130	1230889600	↔	↔	
400.2	Gasket, A.V. Drain	D•E-H	2	PTFE	MDM0025	1240485900		
*858	Drive Magnet Unit <*See Note (1)>	1	5,5•7,5kW	MDM1026	1220298910			
		1	11,0•15,0kW	MDM1028	1220298920			
		1	5,5~15,0kW			MDM1027	1220298930	
B	Impeller+Magnet Capsule Ass'y (D+310+314.2+ 314.4+942)	225	5,5•7,5kW	MDM0836	2270193710	MDM0844	2270193810	
		160~220		<Specify impeller size.>	<Specify impeller size.>			
		225	11,0•15,0kW	MDM0844	2270193810	↔	↔	
		160~220		<Specify impeller size.>	<Specify impeller size.>			
890	Base Plate	A•D	5,5•7,5kW	MDM9993	1220193700	↔	↔	
		A•D	11,0•15,0kW	MDM9986	1220193900	↔	↔	
942	Impeller Pin	2	PFA	MDM0138	1240681900	↔	↔	

*Notes: (1) "Drive Magnet Unit" is furnished with 2 x Setscrew (908.1).

(2) "Impeller" and "Magnet Capsule" are welded together and supplied in a unit.

△ Subject to change without prior notice! △ Actual pump may differ from the exploded view!