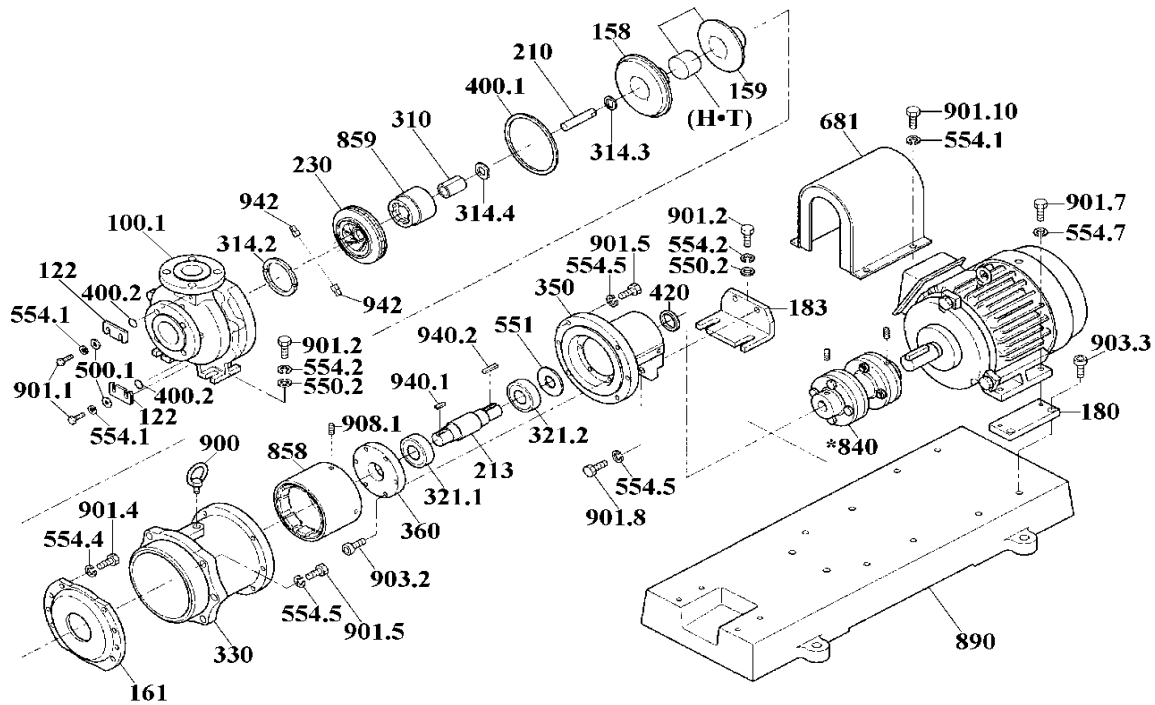




# MDM32-2•50-1-C-(H)•(T)

No. 60-171c  
Sep. 01, 2016



| Item     | Description                                |                | Q'ty        | Material | Part No.                           | Code No.           |
|----------|--|----------------|-------------|----------|------------------------------------|--------------------|
| 180      | Motor Spacer                               | 5,5•7,5kW only | A•D         | 2        | Steel                              | MDM9985 1240486200 |
| 213      | Drive Shaft                                |                |             | 1        | Steel                              | MDM1031 1231137600 |
| 321.1    | Ball Bearing <6308ZZ>                      |                |             | 1        |                                    | MDM1020 0280100275 |
| 321.2    | Ball Bearing <6208ZZ>                      |                |             | 1        |                                    | MDM1019 0280100274 |
| 350      | Bearing Housing                            |                |             | 1        | Ductile Iron                       | MDM1023 1210040800 |
| 360      | Bearing Cover                              |                |             | 1        | Steel                              | MDM1024 1231137700 |
| 420      | Shaft Seal                                 |                |             | 1        | NBR+SUS304                         | MDM1081 0300300199 |
| 681      | Coupling Cover <A•D>                       | 5,5•7,5kW      |             | 1        | Steel                              | MDM9984 1220200730 |
|          |  | 11,0•15,0kW    |             | 1        | Steel                              | MDM9983 1220200740 |
| *840     | Coupling                                   |                | A•D         | 1        | *Please contact IWAKI for details! |                    |
| 900      | Eye Bolt (M12)                             |                |             | 1        | Steel                              | MDM0036 0150800003 |
| 940.1    | Key <10x8x30>                              |                |             | 1        | Steel                              | MDM1030 0155300048 |
| * 940.2  | Key <8x7x40>                               |                |             | 1        | Steel                              | MDM1089 0155300049 |
| * 500.1  | Plate Washer (Drain•Air Vent Plate) M8     |                |             | 4        | A4 (SUS316 eq.)                    | MDM0026 0153500074 |
| * 550.2  | Plate Washer (Base•Support) M12            |                | A•D         | 6        | A4 (SUS316 eq.)                    | MDM0027 0153500029 |
| 551      | Wave Washer (Drive Shaft)                  |                |             | 1        | Spring Steel                       | MDM1025 0154300026 |
| * 554.1  | Spring Washer (Drain•Air Vent•C.Cover) M8  |                |             | 8        | A4 (SUS316 eq.)                    | MDM0028 0154100057 |
| * 554.2  | Spring Washer (Base•Support) M12           |                | A•D         | 6        | A4 (SUS316 eq.)                    | MDM0029 0154100024 |
| * 554.4  | Spring Washer (Cover) M16                  |                |             | 10       | A4 (SUS316 eq.)                    | MDM0490 0154100026 |
| * 554.5  | S.W. (Bearing Housing•Bracket•Support) M12 |                |             | 10       | A4 (SUS316 eq.)                    | MDM0029 0154100024 |
| * 554.7  | Spring Washer (Motor)                      | M10            | 5,5•7,5kW   | 4        | A4 (SUS316 eq.)                    | MDM0030 0154100022 |
|          |  | M12            | 11,0•15,0kW | 4        | A4 (SUS316 eq.)                    | MDM0029 0154100024 |
| * 901.1  | Hex. Bolt (Drain•Air Vent Plate) M8x20     |                |             | 4        | A4 (SUS316 eq.)                    | MDM0037 0150100163 |
| * 901.2  | Hex. Bolt (Base•Support) M12x35            |                | A•D         | 6        | A4 (SUS316 eq.)                    | MDM0136 0150100207 |
| * 901.4  | Hex. Bolt (Cover) M16x45                   |                |             | 10       | A4 (SUS316 eq.)                    | MDM0491 0150100240 |
| * 901.5  | Hex. Bolt (B. Housing•Bracket) M12x35      |                |             | 8        | A4 (SUS316 eq.)                    | MDM0136 0150100207 |
| * 901.7  | Hex. Bolt (Motor)                          | M10x30         | 5,5•7,5kW   | 4        | A4 (SUS316 eq.)                    | MDM0040 0150100182 |
|          |  | M12x35         | 11,0•15,0kW | 4        | A4 (SUS316 eq.)                    | MDM0136 0150100207 |
| * 901.8  | Hex. Bolt (Support) M12x30                 |                |             | 2        | A4 (SUS316 eq.)                    | MDM0042 0150100206 |
| * 901.10 | Hex. Bolt (Coupling Cover) M8x16           |                | A•D         | 4        | A4 (SUS316 eq.)                    | MDM9988 0150100162 |
| ** 903.2 | Cap Bolt (Bearing Housing) M6x20           |                |             | 6        | A4 (SUS316 eq.)                    | MDM0043 0150300093 |
| * 903.3  | Cap Bolt (Motor Spacer) M10x25 <5,5•7,5kW> |                |             | 4        | A4 (SUS316 eq.)                    | MDM9987 0150300118 |
| 908.1    | Setscrew (Drive Magnet Unit) M8x10         |                |             | 2        | Steel                              | MDM0044 0152100046 |

△ Subject to change without prior notice! △ Actual pump may differ from the exploded view!