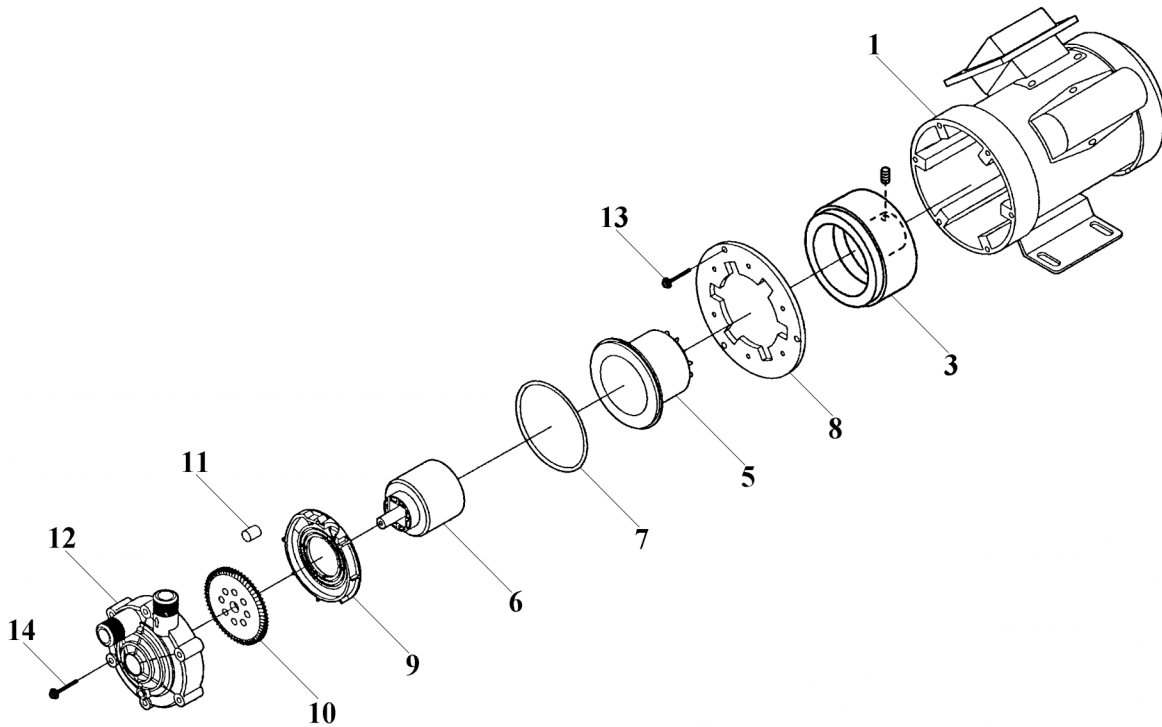


# MDT-15•20

No. 70-002  
Mar. 01, 2006



Item	Description	Q'ty	Material	MDT-15		MDT-20	
				Part No.		Part No.	
1	Motor [AC220/240V] 1-Phase	1		MDT0004		ï	
3	Drive Magnet Unit	1	ADC12+Ferrite Mg.	MDT0005		ï	
5	Rear Casing [GFRPPS] Unit (with Bearing)	"C"	Carbon	MDT0023		ï	
		"D"	Siliconized Carbon	MDT0024		ï	
6	Driven Magnet Unit	1	PPS+CE+Ferrite M.	MDT0009		ï	
7	O-Ring, G-80	1	EPDM	MDT0010		ï	
8	Mounting Plate	1	Aluminium Alloy	MDT0011		ï	
9	Rear Plate		CFRPPS	MDT0012			
			CFRPPS			MDT0013	
10	Impeller	"L"	CFRPEEK	MDT0014		ï	
		"H"	CFRPEEK	MDT0015		ï	
11	Positioning Pin	1	GFRPPS	MDT0016		ï	
12	Front Casing (R1/2") Unit (with Bearing)	"15-CA"	Carbon	MDT0025			
		"15-DA"	Siliconized Carbon	MDT0027			
		"20-CA"	Carbon			MDT0029	
		"20-DA"	Siliconized Carbon			MDT0031	
13	Screw	M5x15	3	SUS304 equivalent	MDT0021		ï
14	Screw with S.W+P.W.	M4x30	6	SUS304 equivalent	MDT0022		ï

△ Subject to change without prior notice! △ Actual pump may differ from the exploded view!