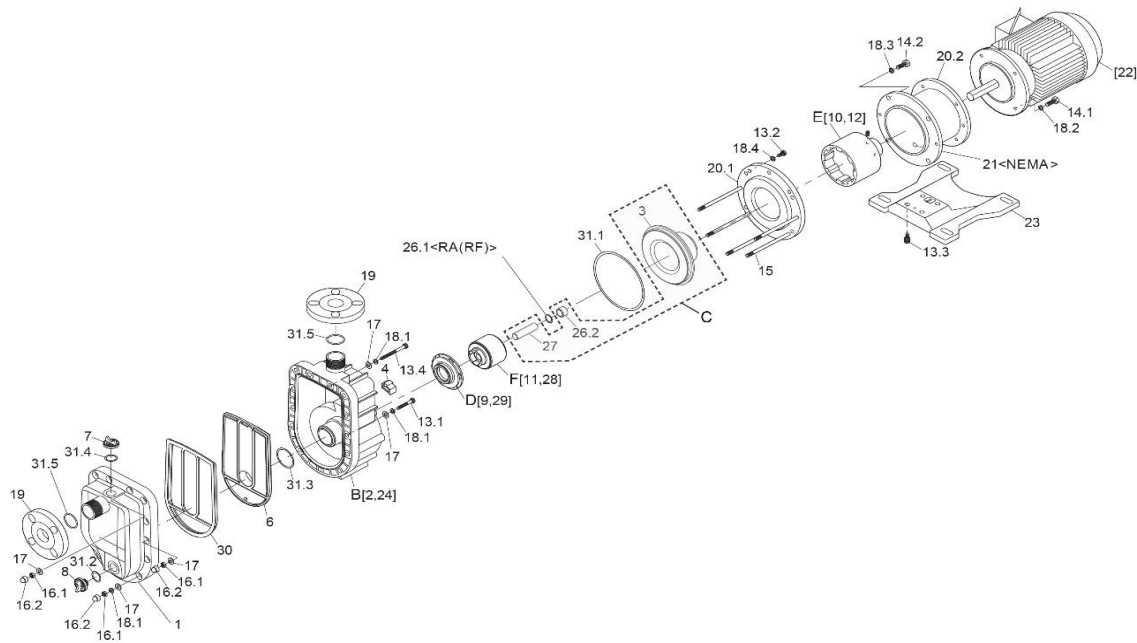


Item	Description	Q'ty	Material	SMX-441 (0,75kW)		SMX-442 (1,5kW)	
				Part No.	Code No.	Part No.	Code No.
1	Front Case	1	GFRPP	SMX0041	1210041300	↔	↔
B	Rear Case (+Liner R.) Unit	1	GFRPP+CE	SMX0043	1210041400	↔	↔
3	Rear Casing	1	GFRPP	SMX0004	1231156700	↔	↔
C	Rear casing assembly (3,26.2,27)	CA	GFRPP+Al Ceramics	SMX0150		↔	↔
		RA	GFRPP+Al Ceramics	SMX0151		↔	↔
		KA	GFRPP+SiC	SMX0152		↔	↔
4	Volute Spacer	1	GFRPP	SMX0045	1240834900	↔	↔
6	Plate	1	GFRPP	SMX0046	1220304100	↔	↔
7	Cap	1	GFRPP	SMX0008	1240833200	↔	↔
8	Drain Cap	1	GFRPP	SMX0009	1240833300	↔	↔
D	Impeller (w/Mouth R.) Unit	1	GFRPP+PTFE	SMX0048	1240835600	↔	↔
*E	Drive Magnet Unit	<J1> 0,75kW	FCD450+Mg.	MX0227	1230977000		
		<J2> 1,5kW	FCD450+Mg.			MX0310	1230987200
F	Magnet Capsule+ Bearing Unit	CAV•CAE	PP+Carbon+Mg.	MX0122	1230976410	SMX0038	1231159310
		RAV•RAE	PP+PTFE+Mg.	MX0123	1230976420	SMX0039	1231159320
		KAV•KAE	PP+SiC+Mg.	SMX0037	1230976440	SMX0040	1231159330
13.1	Cap Bolt (M8x45)	6	SUS304 equiv.	SMX0082	0150300037	↔	↔
13.2	Cap Bolt (M8x15)	3	SUS304 equiv.	SMX0059	0150300030	↔	↔
13.3	Cap Bolt with W. (M8x20)	4	Steel	MX0219	0150900033	↔	↔
13.4	Cap Bolt (M8x85)	2	SUS304 equiv.	SMX0083	0150300574	↔	↔
14.1	Hex. Head Bolt (M10x25)	4	SUS304 equiv.	MDM0041	0150100181	↔	↔
14.2	Hex. Head Bolt (M10x25)	4	SUS304 equiv.	MDM0041	0150100181	↔	↔
15	Stud Bolt (M8)	5	SUS304	SMX0084	1240833900	↔	↔
16.1	Nut (M8)	13	SUS304 equiv.	SMX0064	0153100029	↔	↔
16.2	Cover Cap	13	PE	SMX0065	0159000000	↔	↔
17	Plate Washer (M8)	21	SUS304 equiv.	MDM0026	0153500074	↔	↔
18.1	Spring Washer (M8)	13	SUS304 equiv.	MDM0028	0154100057	↔	↔
18.2	Spring Washer (M10)	4	SUS304 equiv.	MDM0030	0154100022	↔	↔
18.3	Spring Washer (M10)	4	SUS304 equiv.	MDM0030	0154100022	↔	↔
18.4	Spring Washer (M8)	3	SUS304 equiv.	MDM0028	0154100057	↔	↔

*Note: "Drive Magnet Unit" is furnished with 2 x Setscrew (M8x10).

⚠ Subject to change without prior notice! ⚠ Actual pump may differ from the exploded view!



Item	Description	Q'ty	Material	SMX-441 (0,75kW)		SMX-442 (1,5kW)	
				Part No.	Code No.	Part No.	Code No.
19	Flange (ISO)	2	GFRPP	MX0232	1230371400	↔	↔
20.1	Rear Casing Support	1	FCD450	SMX0069	1231156800	↔	↔
20.2	Adapter	0,75kW	FCD450	SMX0075	1210041600		
		1,5kW	FCD450			SMX0079	1210041700
23	Base	1	GFRPP	SMX0073	1220303100	↔	↔
*26.1	Rear Thrust Ring "RA"	1	Al. Ceramic	SMX0016	1240833500	↔	↔
26.2	Rear Thrust	CA•KA	CFRPPS	MX0119	1240724900	↔	↔
		RA	CFRPPS	SMX0018	1240833600	↔	↔
27	Spindle	CA•RA	Al. Ceramic	MX0118	1240725000	↔	↔
		KA	SiC	MX0427	1240765100	↔	↔
30	Gasket	V	FKM-A	SMX0051	1220303700	↔	↔
		E	EPDM	SMX0052	1220303800	↔	↔
31.1	O-Ring, G-160	V	FKM-A	SMX0023	0325300186	↔	↔
		E	EPDM	SMX0024	0325300187	↔	↔
31.2	O-Ring, G-25	V	FKM-A	MX0117	0325300203	↔	↔
		E	EPDM	MX0205	0325300179	↔	↔
31.3	O-Ring, G-50	V	FKM-A	SMX0053	0325300057	↔	↔
		E	EPDM	SMX0054	0325300091	↔	↔
31.4	O-Ring, G-30	V	FKM-A	SMX0029	0325300053	↔	↔
		E	EPDM	SMX0030	0325300087	↔	↔
31.5	O-Ring, AS568-129	V	FKM-A	MX0130	0325500010	↔	↔
		E	EPDM	MX0233	0325500014	↔	↔

*Note: "Rear Thrust Ring" (Pos. 26.1) is required for "RA" models only.

⚠ Subject to change without prior notice! ⚠ Actual pump may differ from the exploded view!